

Acer Monitor KA270H

LIFECYCLE EXTENSION GUIDE

Contents

Table of Contents

Important Safety Notice	3
1. Exploded Diagram	4
2. Wiring connectivity diagram	5
3. Mechanical Instruction	6
4. Disassembly and Assembly SOP	7
5. Troubleshooting	12
6. FRU List	14

Safety Notice

Any person attempting to service this chassis must familiarize with the chassis and be aware of the necessary safety precautions to be used when serving electronic equipment containing high voltage

Important Safety Notice

Product Announcement:

This product is certificated to meet RoHS Directive and Lead-Free produced definition. Using approved critical components only is recommended when the situation to replace defective parts. Vender assumes no liability express or implied, arising out of any unauthorized modification of design or replacing non-RoHS parts. Service providers assume all liability.

Qualified Repairability:

Proper service and repair is important to the safe, reliable operation of all series products. The service providers recommended by vender should being aware of notices listed in this service manual in order to minimize the risk of personal injury when perform service procedures. Furthermore, the possible existed improper repairing method may damage equipment or products. It is recommended that service engineers should have repairing knowledge, experience, as well as appropriate product training per new model before performing the service procedures.

NOTICE:

! To avoid electrical shocks, the products should be connect to an authorized power cord, and turn off the master power switch each time before removing the AC power cord.

! To prevent the product away from water or explosed in extremely high humility environment.

! To ensure the continued reliability of this product, use only original manufacturer's specified parts.

! To ensure following safety repairing behavior, put the replaced part on the components side of PWBA, not solder side.

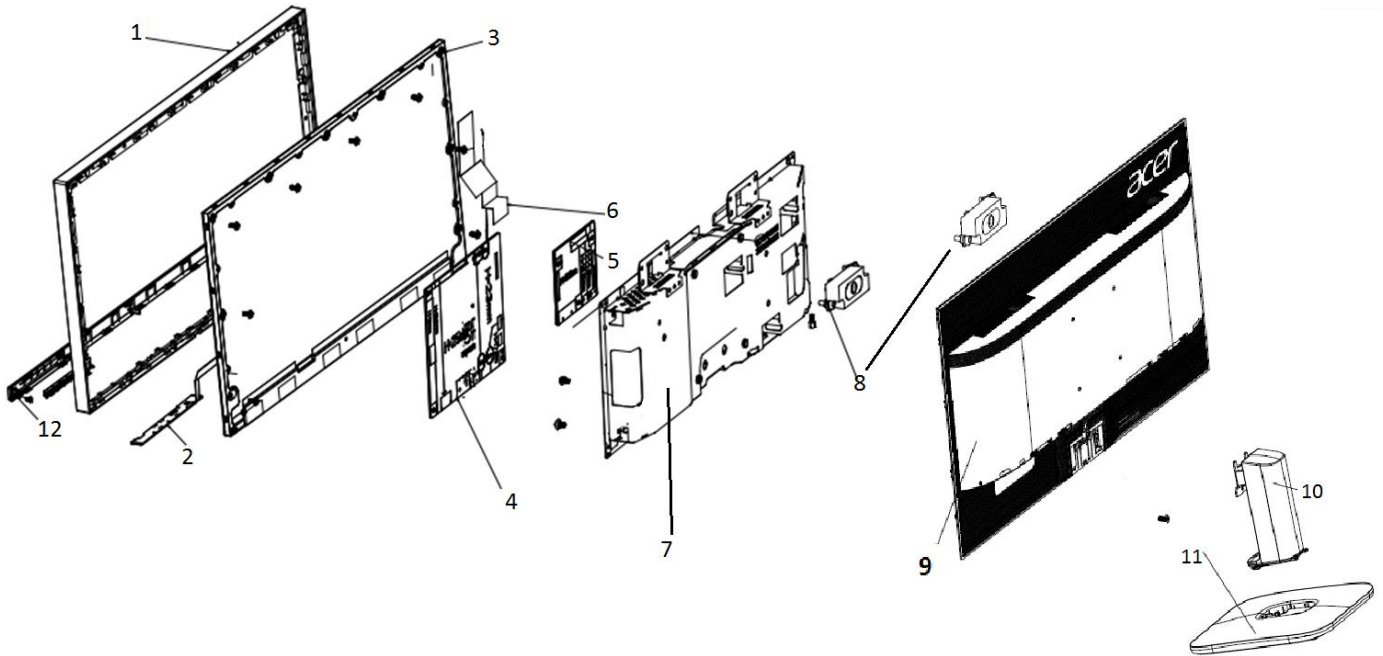
! To ensure using a proper screwdriver, follow the torque and force listed in assembly and disassembly procedures to screw and unscrew screws.

! Using Lead-Free solder to well mounted the parts.

! The fusion point of Lead-Free solder requested in the degree of 220°C.

1. Exploded Diagram

1.1 Product Exploded Diagram



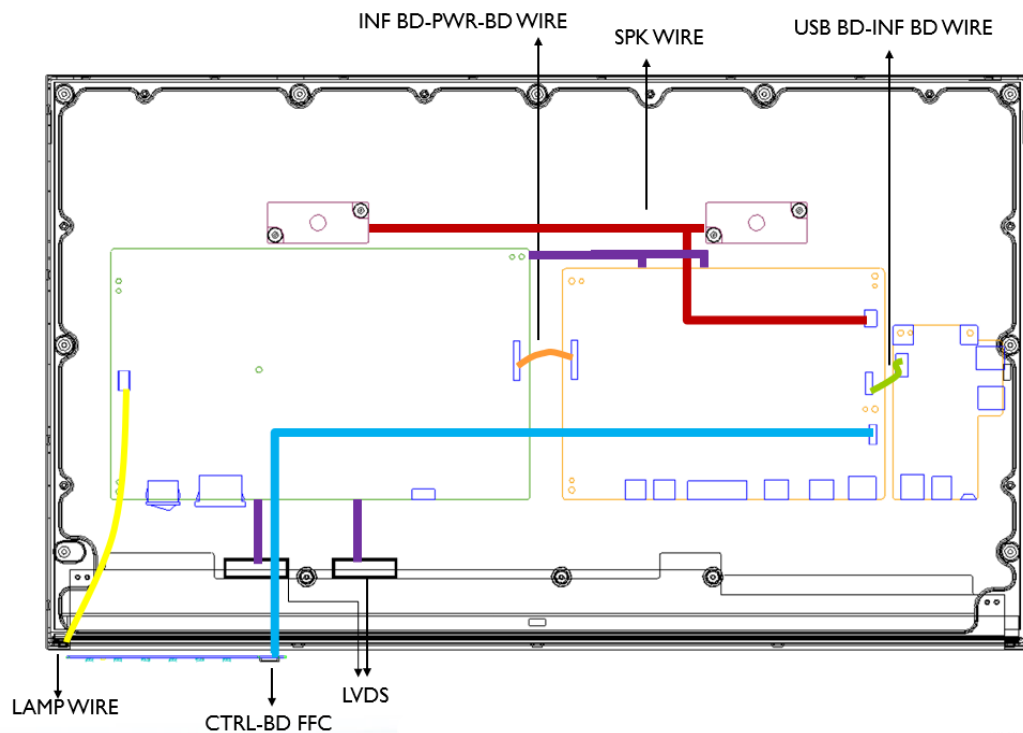
INDEX	DESCRIPTION
1	MID-FRAME
2	PCBA CTRL BD
3	LCDM 27W AUO M270HVN02.3Q0 Z
4	PCBA SPS BD
5	PCBA IF BD
6	FFC LVDS 30P P1 B276HL
7	ASSY SHD AH1 1A1D1H+SPK V276HL
8	#SPK*2 2.5W 4OHM 320/320MM
9	ASSY RC 1A1D1H+SPK DB22A V276H
10	ASSY CLMN KA270H
11	ASSY BASE KA270H
12	ASSY TRIM K272HL

2. Wiring connectivity diagram

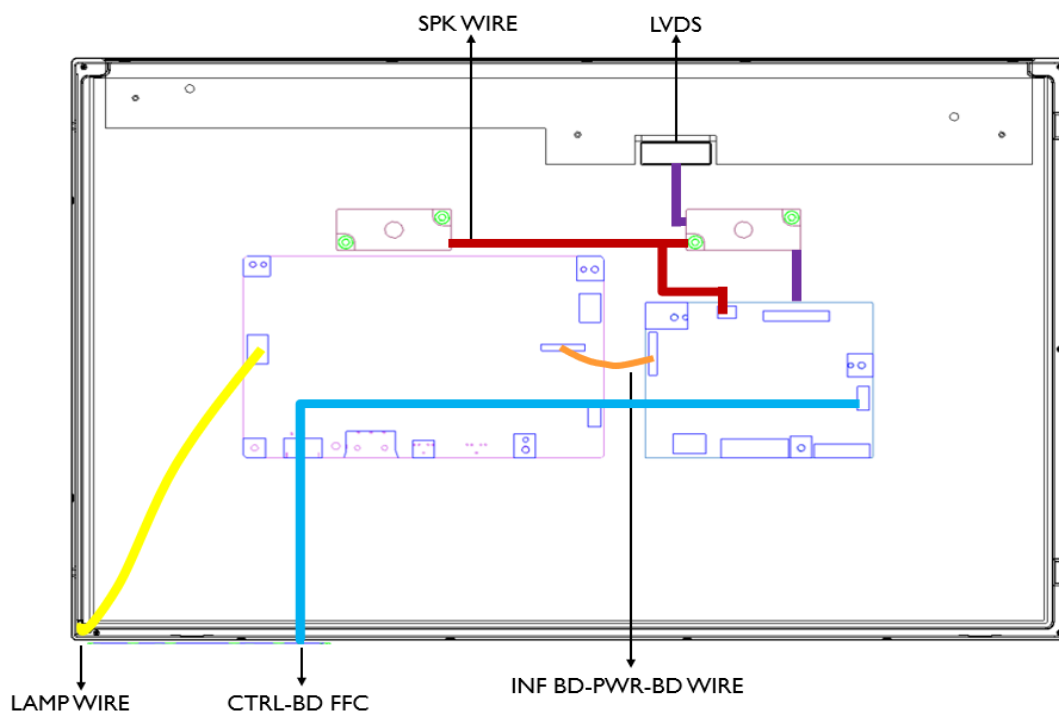
There are four types of wiring diagrams for model KA270H. The wiring connectivity position will be different according to the ACTUAL PCBA connector position. Please base on different SKU refer to below diagram.

NOTE: INF BD= Interface Board, PWR BD=Power Board, CTRL BD= Control Board

1. SKU with USB



2. SKU without USB



Mechanical Instruction

Tools Required

List the type and size of the tools that would typically can be used to disassemble the product to a point

where components and materials requiring selective treatment can be removed.

Tool Description:

- working table
- Screw-driver: Philips-head screwdriver, Hex-head screwdriver
- Knife
- glove
- cleaning cloth
- ESD protection

4. Disassembly and Assembly SOP

KA270H

4.1 Disassembly Procedures

Preparation before disassemble

1. Clean the room for disassemble
2. Identify the area for monitor
3. Check the position that the monitors be placed and the quantity of the monitor ;prepare the area for material flow; according to the actual condition plan the disassemble layout
4. Prepare the implement, equipment, materials as bellow:
 - 1) working table
 - 2) Screw-driver: Philips-head screwdriver, Hex-head screwdriver
 - 3) knife
 - 4) glove
 - 5) cleaning cloth
 - 6) ESD protection



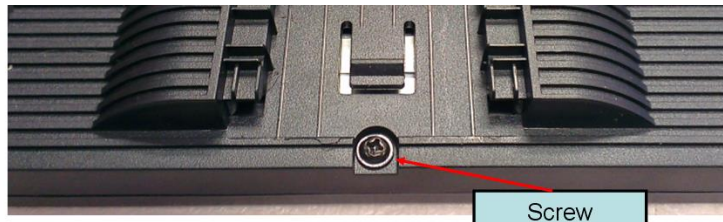
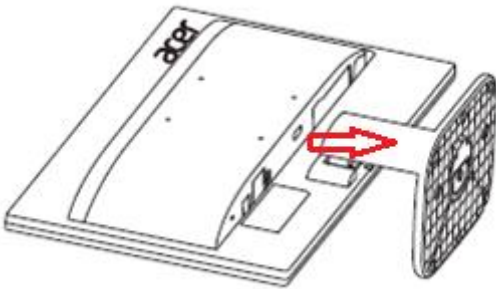
After unplugging the power cord, the power board still have power energe. Please pay attention when disassembling/assembling Power BD.

S1

Disassemble the RC(Rear Case), stand and base

Before Disassembling & Assembling, monitor need to be put on the sponge and the Insulation glove must be wore during the process.

Disassemble Stand and Base from the RC(Rear Case). Unlock RC screws. Disassemble RC from monitor.

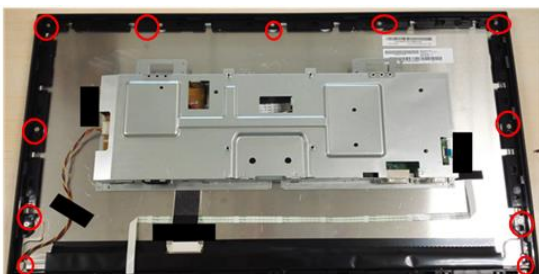


S2

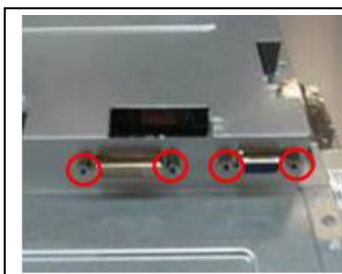
Disassemble SHD and MF

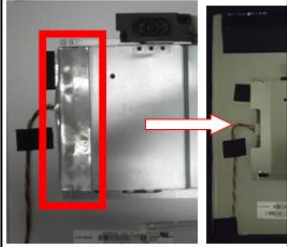
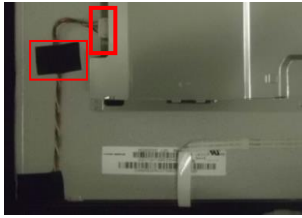
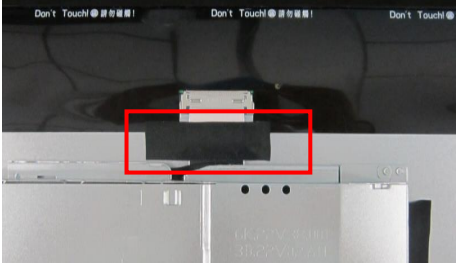
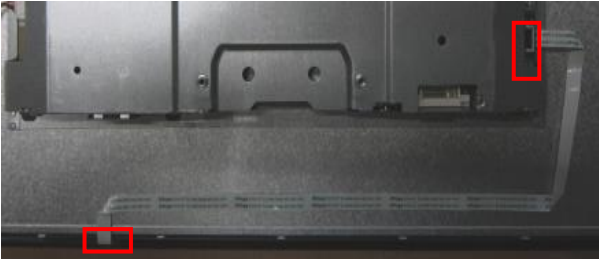

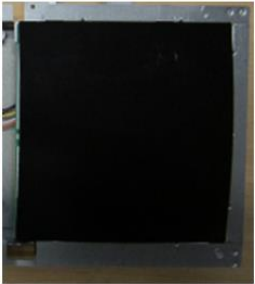
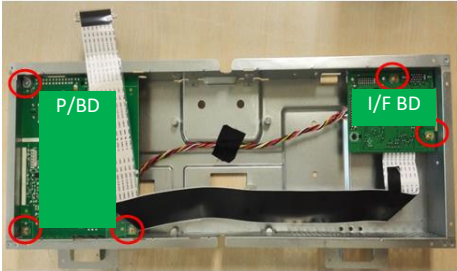

Unlock 9 MF screws and 2 trim screws as picture 1.
Unlock the Hexagonal screws as picture 2.

PICTURE 1



PICTURE 2



<p>S3 Disassemble the lamp wire</p>	<p>Tear down AL-Tape off SHD(Shielding) as picture 1. Tear off the tape on the lamp wire and extract the lamp wire from the P/BD(Power Board) as picture 2.</p>
<p>PICTURE 1</p> 	<p>PICTURE 2</p> 
<p>S4 Disassemble LVDS cable and CTRL BD</p>	<p>Tear off the tape, pull out the FFC as picture 1. Pull the CTRL BD-FFC out of the PCBA and the CTRL BD, tear off the tape and disassemble the CTRL BD-FFC</p>
<p>PICTURE 1</p> 	<p>PICTURE 2</p> 
<p>S5 Disassemble the Bezel from panel.</p>	<p>Tear off the tapes, take out the Panel and the CTRL BD of the Bezel</p>
	
<p>S6 Disassemble I/F BD and P/BD from SHD.</p>	<p>Disassembled the Mylar and unlock all screws. Disassemble the I/F BD from the SHD and extract the P/BD wire. Extract the FFC LVDS from the I/F BD. Disassemble the P/BD from the SHD.</p>
<p>PICTURE 1</p> 	<p>PICTURE 2</p> 
 <p>NOTE: Circuit boards >10 cm² has been highlighted with the yellow rectangle as above image shows. Please detach the Circuit boards and follow local regulations for disposal.</p>	

4.2 Assembly Procedures

Preparation before assemble:

1. Clean the room for work
2. Identify the area for material
3. Prepare the implement, equipment, materials as bellow:
 - 1) working table
 - 2) Screw-driver
 - 3) Knife
 - 4) glove
 - 5) cleaning cloth
 - 6) ESD protection



After unplugging the power cord, the power board still have power energy. Please pay attention when disassembling/assembling Power BD.

S1

Assemble I/F BD and P/BD

Before Disassembling & Assembling, monitor need to be put on the sponge and the Insulation glove must be wore during the process.

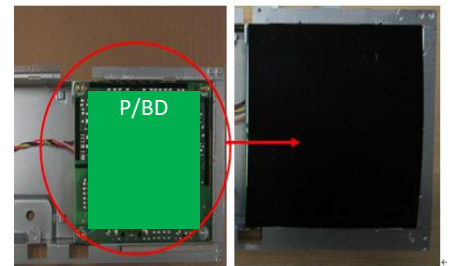
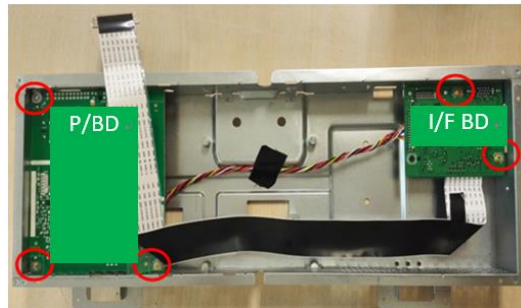
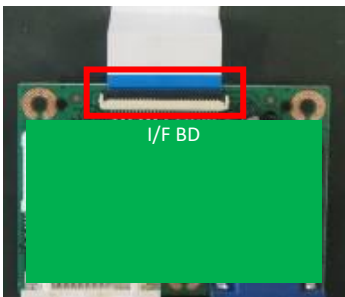
Insert the FFC to the I/F.

Insert the P/BD-Wire to the I/F BD and the P/BD.

Place the I/F BD and the Power BD to main SHD.

stick one tape on the SHD remarked with red circle and lock all screws as the picture.

Put Mylar on the Power BD.

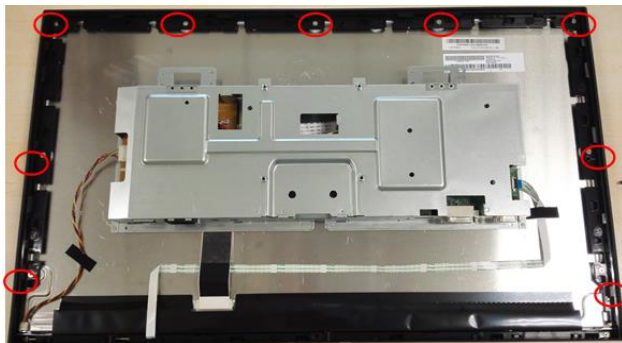
**S2**

Assemble MF and Panel

Take the Panel and insert lamp wire to panel

Assemble the MF to the panel ,and lock 9 screws to the MF as the picture.

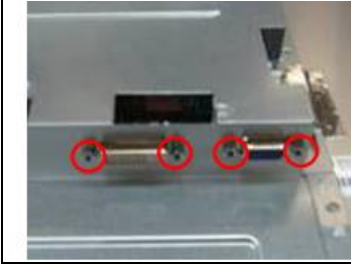
PICTURE 1



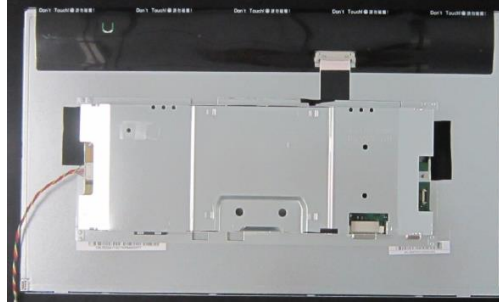
S3 Assemble SHD

Lock the Hexagonal screws as picture 1.
Use jig to put the SHD in correct position on Panel. Take off the jig and stick two AL tapes as picture 2.

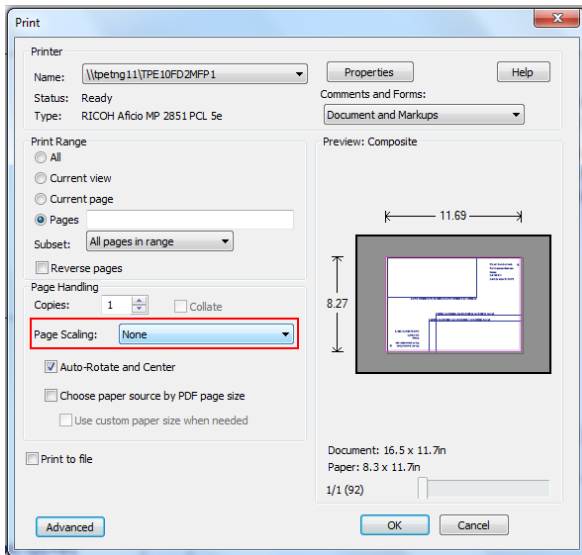
PICTURE 1



PICTURE 2

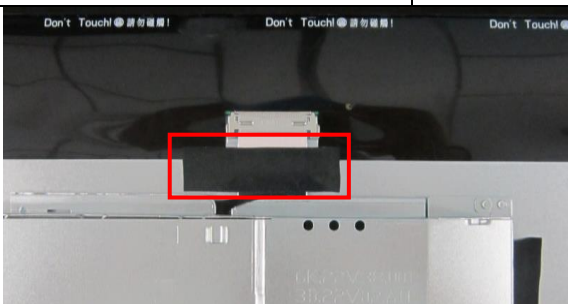


Note: please refer to Appendix for the jig and select "None" for page scaling item.



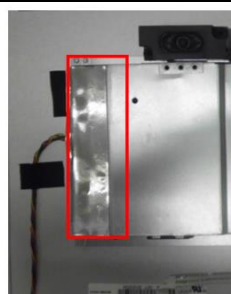
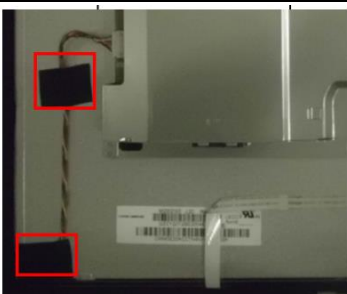
S4 Assemble LVDS cable

Insert the LVDS cable to the Panel and stick one tape on LVDS cable.



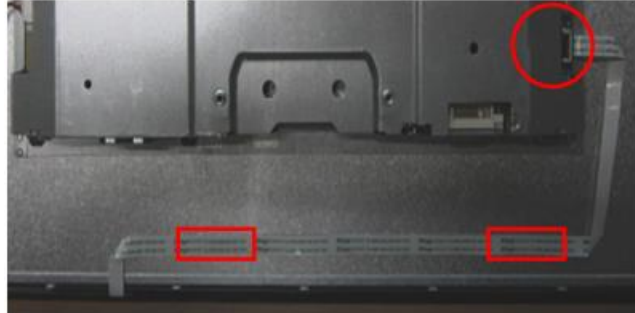
S5 Assemble the lamp wire

Insert the lamp wire to the P/BD .
Stick 2 tape to fasten the lamp wire and one AL-Tape on SHD as the picture.



S6
Assemble CTRL-BD

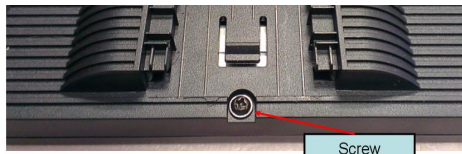
Insert the CTRL BD-FFC to CTRL BD as circle frame, and insert them into the bezel.
Assemble the panel on the bezel and lock 2 trim screws.
Stick Mylar on CTRL BD FFC as square frame and Insert the CTRL BD -FFC to the PCBA as circle frame.



S7
Assemble RC, stand and base

Assemble the RC with screw.
Assembly the Stand and the Base to Monitor

PICTURE 1



PICTURE 2



NOTE: Circuit boards >10 cm² has been highlighted with the yellow rectangle as above image shows. Please detach the Circuit boards and follow local regulations for disposal.

5. Troubleshooting

TROUBLESHOOTING

Before sending your LCD monitor for servicing, please check the trouble-shooting list below to see if you can self-diagnose the problem.

(VGA Mode)

Problems	Current Status	Remedy
No Picture	LED ON	<ul style="list-style-type: none"> Using OSD, adjust brightness and contrast to maximum or reset to their default settings.
	LED OFF	<ul style="list-style-type: none"> Check the power switch.
		<ul style="list-style-type: none"> Check if AC power cord is properly connected to the monitor.
	LED displays amber color	<ul style="list-style-type: none"> Check if video signal cable is properly connected at the back of monitor.
<ul style="list-style-type: none"> Check if the power of computer system is ON. 		
Abnormal Picture	Unstable Picture	<ul style="list-style-type: none"> Check if the specification of graphics adapter and monitor is in compliance which may be causing the input signal frequency mismatch.
	Display is missing, center shift, or too small or too large in display size	<ul style="list-style-type: none"> Using OSD, adjust RESOLUTION, CLOCK, CLOCK-PHASE, H-POSITION and V-POSITION with non-standard signals. Using OSD, in case of missing full-screen image, please select other resolution or other vertical refresh timing. Using OSD, in case of missing full-screen image, please select other resolution or other vertical refresh timing. Wait for a few seconds after adjusting the size of the image before changing or disconnecting the signal cable or powering OFF the monitor.
Abnormal Sound (Only Audio-Input model) (Optional)	No sound, or sound level is too low	<ul style="list-style-type: none"> Check the audio cable with the host PC is connected.
		<ul style="list-style-type: none"> Check if the volume setup of the host PC is in minimum position and try to raise the volume level.

(HDMI/DP Mode)



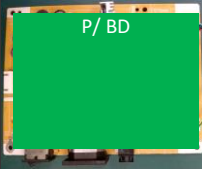

Problems	Current Status	Remedy
No Picture	LED ON	<ul style="list-style-type: none"> Using OSD, adjust brightness and contrast to maximum or reset to their default settings.
	LED OFF	<ul style="list-style-type: none"> Check the power switch.
		<ul style="list-style-type: none"> Check if AC power cord is properly connected to the monitor.
	LED displays amber color	<ul style="list-style-type: none"> Check if video signal cable is properly connected at the back of monitor.
<ul style="list-style-type: none"> Check if the power of computer system is ON. 		
Abnormal Sound (Only Audio-Input model) (Optional)	No sound, or sound level is too low	<ul style="list-style-type: none"> Check the audio cable with the host PC is connected.
		<ul style="list-style-type: none"> Check if the volume setup of the host PC is in minimum position and try to raise the volume level.

6. FRU List

This chapter gives you the FRU (Field Replaceable Unit) listing in global configurations of ACER KA220H. Refer to this chapter whenever ordering for parts to repair or for RMA (Return Merchandise Authorization).

Please note that WHEN ORDERING FRU PARTS, you should check the most up-to-date information available on your regional web or channel. For whatever reasons a part number change is made, it will not be noted on the printed Service Guide. For AUTHORIZED SERVICE PROVIDERS, your office may have a DIFFERENT part number code from those given in the FRU list of this printed Service Guide. You MUST use the local FRU list provided by your regional office to order FRU parts for repair and service of customer machines

NOTE: To scrap or to return the defective parts, you should follow the local government ordinance or regulations on how to dispose it properly, or follow the rules set by your regional office on how to return it.

Category	ACER DESCRIPTION	Description	PART NO.
LCD			
	LED LCD Panel AUO 27'H FHD None Glare M270HVN02.3 Q0-Z19 LF 300nit 12ms VA	LCDM 27W AUO M270HVN02.3Q0 Z	KL.27005.021
BOARD			
	MAIN BD	PCBA IF BD MI VA270H AUO H+S	55.T5UM3.001
	POWER BD	PCBA SPS BD MI H+S V276HL AUO	55.T5UM3.002
	CONTROL BOARD	PCBA CTRL BD SMD B276HL	55.T4HM3.003